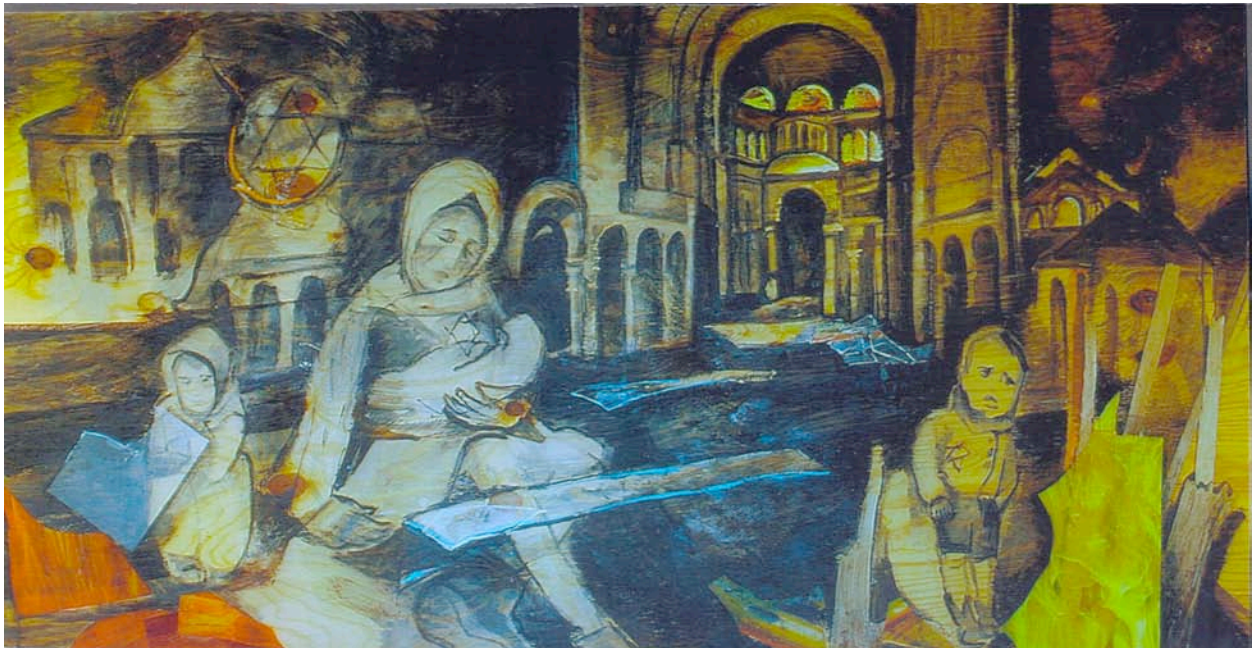


# You're invited!

The Network of Religious Communities is pleased to invite you to an evening of friendship, insight and reflection



”Kristallnacht” from Engrained Forever Holocaust collection by Mimi Schiff

**THURSDAY NOVEMBER 16, 2006**

**Temple Beth Am, 4660 Sheridan Drive, Williamsville, NY**

**7:00 P.M.** Friendship Dinner catered by Jonny C’s New Yawk Delli \$10.00 per person.

**7:45 PM** Talk by Sol Messinger M.D., Associate Pathologist, Millard Fillmore Hospital.  
In 1939 Sol was among the 930 Jewish passengers, who, following Kristallnacht, fled Germany on the ill-fated SS St. Louis. Refused entry at any port they were forced to return to Germany.  
“How lessons of the past affect who we are today.”

**8:30 P.M.** Viewing of the Engrained Forever Holocaust Collection by Mimi Schiff.

**For reservations call Network of Religious Communities 716-882-4793**