

Special Requests

If you require specific aids, diet or services during this program, please contact our office one week prior to the course. For further information about this program, please contact:

Fr. Richard Augustyn
(716) 859-2864

Buffalo General Hospital

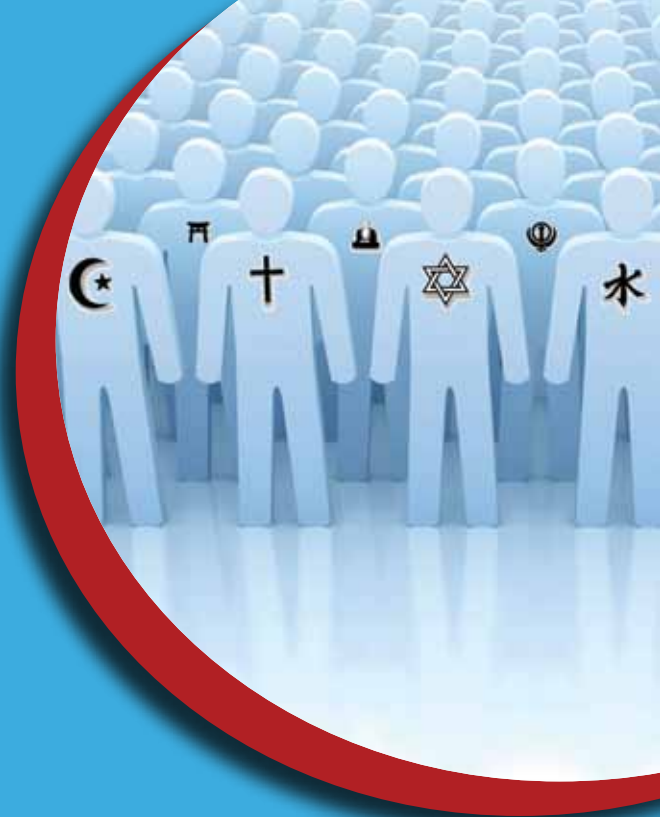
Pastoral Care Office
100 High Street
Buffalo, NY 14203



Language assistance services are available free of charge for anyone who has a need for an interpreter.

Tenemos servicios de ayuda en Español, para cualquiera que necesita un intérprete.

BGH-549 09/11



Exploring the Dimensions of Health Care in a Religiously Diverse Community

Tuesday, October 25, 2011
8 a.m.-4 p.m.

Millennium Hotel
2040 Walden Avenue
Cheektowaga, NY 14225

Exploring religious diversity

Co-provided by:
Kaleida Health Bereavement Committee
Erie County Medical Center and
The Network of Religious Communities

About the Conference

Goal: The conference will explore religious diversity and the spiritual dimensions which enhance quality patient care on a daily basis. The small group discussions will focus on specific religions of participants' choice.

Who should attend: All healthcare professionals

Date: Tuesday, October 25, 2011

Time: 8 a.m. - 4 p.m.

Place: Millennium Hotel
2040 Walden Avenue
Cheektowaga, NY 14225

Fee: \$40 (includes continental breakfast, lunch and course materials)

Objectives

At the conclusion of the program, the participant will be able to:

1. Describe the importance of spirituality in health care
2. Identify how spirituality can impact the patient/family experience
3. List specific cultural and religious beliefs and practices that may influence patient care.
4. Identify the characteristics of specific religious beliefs and practices
5. Describe health care concerns related to various religious traditions
6. Identify ways in which spirituality impacts delivery of nursing care

Conference Schedule

8 a.m.	Registration and Breakfast
8:30 a.m.	Welcome
8:45 a.m.	Dr. Stan Bratton: <i>Religious Landscape</i>
9:30 a.m.	Dr. David Holmes: <i>Spirituality in Medicine</i>
10:15 a.m.	Break
10:30 a.m.	Small Group Discussion
11:15 a.m.	Small Group Discussion
12 p.m.	Lunch
1 p.m.	Reverend Amos Acree, RN: <i>Spirituality and Patient Care as Seen by the Nurse</i>
1:45 p.m.	Small Group discussion
2:30 p.m.	Break
2:45 p.m.	Panel Discussion
3:45 p.m.	Evaluations
4 p.m.	Closing Remarks

Small Group Discussion Choices:

Islam:	Dr. Othman Shibly
Hinduism:	Dr. Vijay Chakravarthy
Sikism:	Dr. Surjit Singh
Native American:	Adrian John
Buddhism:	Dr. Jeannette Ludwig
Judaism:	Rabbi Alex Lazarus-Klein
Christianity:	Reverend Jeff Carter Reverend Francis X. Mazur
BaHa'l:	Dr. Iskandar Hai
Church of Jesus Christ of Latter Day Saints:	Dr. Stephen Free

Kaleida Health is an approved provider of continuing nursing education by the New York State Nurses Association, an accredited approver by the American Nurses Credentialing Center's Commission on Accreditation.

This program has been assigned code 7PELCB-PRV-09-24 for 5.75 contact hours.

Registration Form

Please register me for "**Exploring the Dimensions of Health Care in a Religiously Diverse Community**"

Fee: \$40 (includes continental breakfast, lunch and course materials). Amount Enclosed: _____

Name: _____

Email: _____

Home Address: _____

City/State: _____

Zip Code: _____

Work Phone: _____

Home Phone: _____

Employing Agency: _____

Kaleida Site: _____

Kaleida Employee Number: _____

Please select your top four religious preferences for small group discussions. You will be assigned to three groups.

1. _____

2. _____

3. _____

4. _____

R.S.V.P. by October 14, 2011.

Please make checks payable (in U.S. funds) to:

BGH Pastoral Care Office
100 High Street
Buffalo, NY 14203

Complete registration form (payment must accompany this form to secure the registration). A \$20 fee will be assessed for all checks returned for insufficient funds.